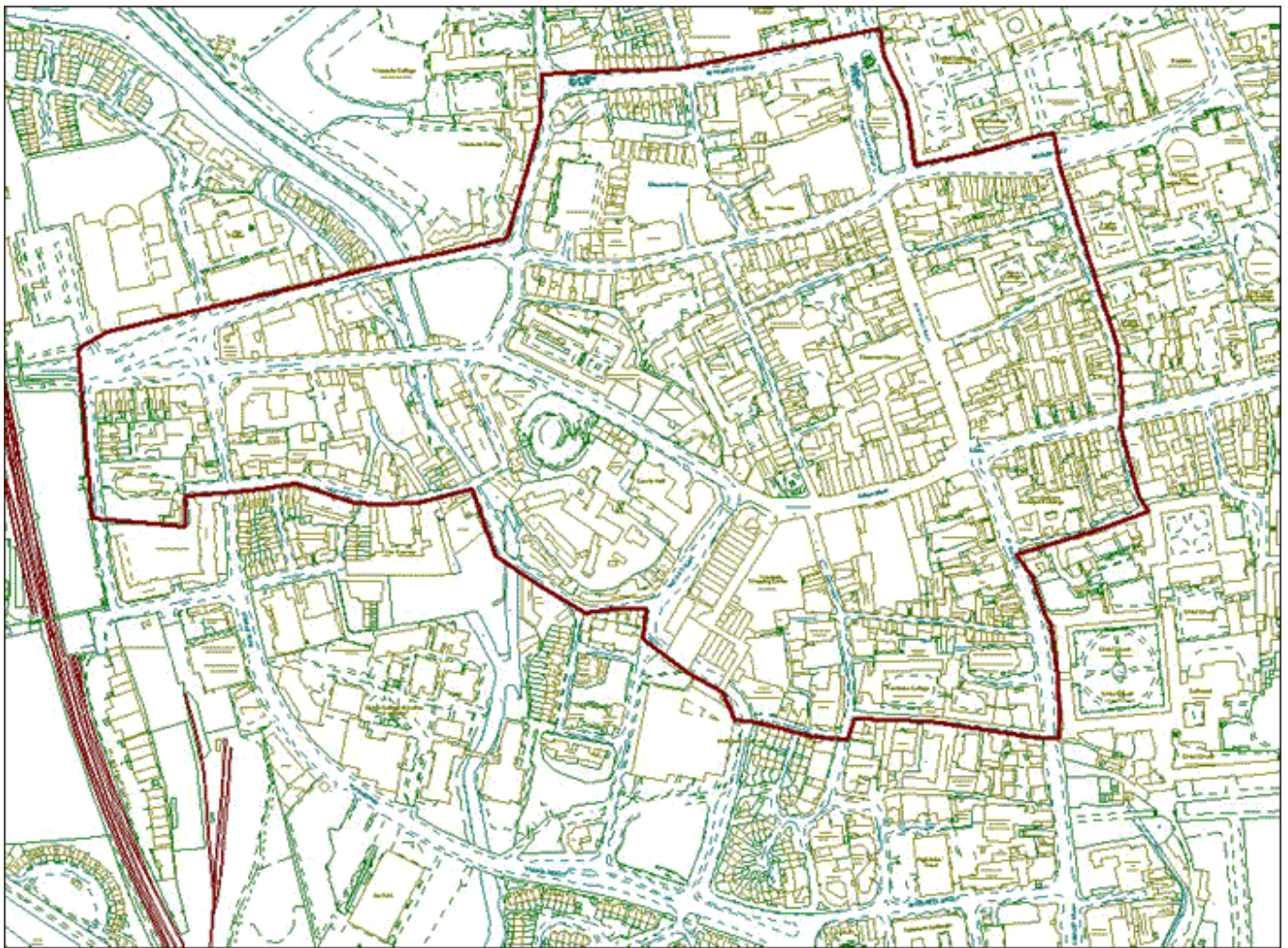


Existing Special Saturation Area for Oxford city

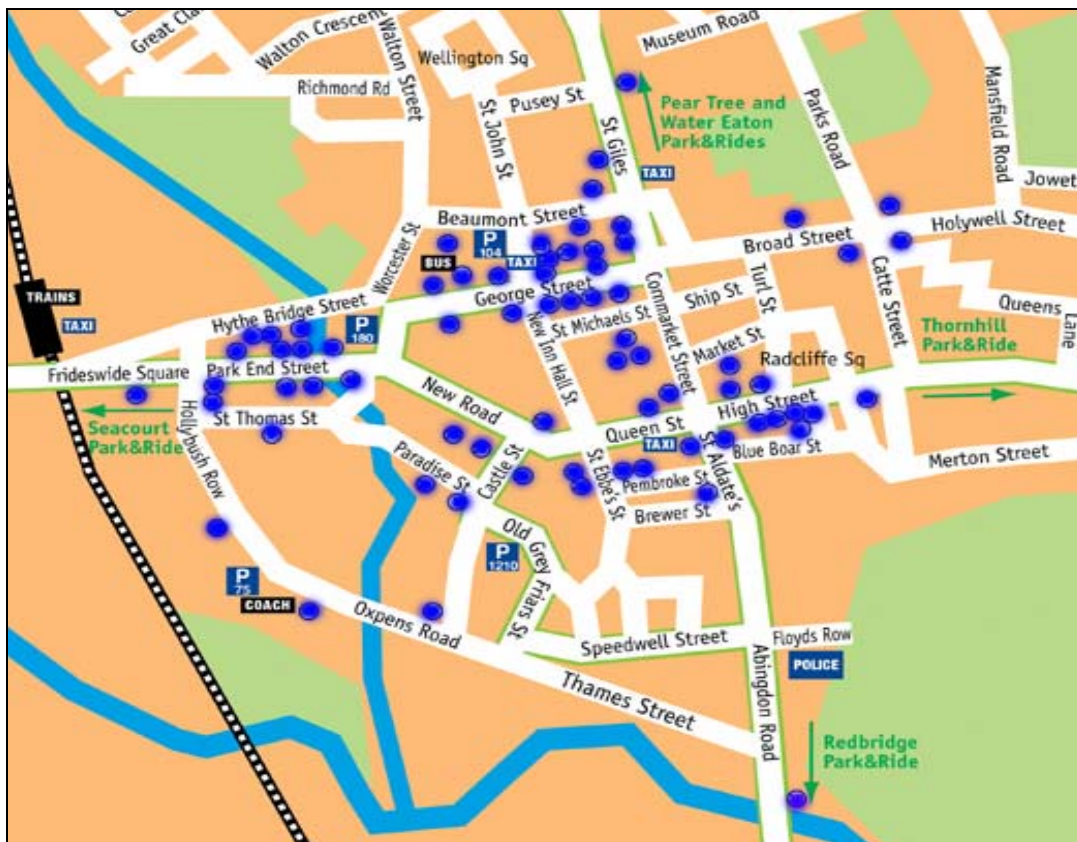


SSA Boundary ———

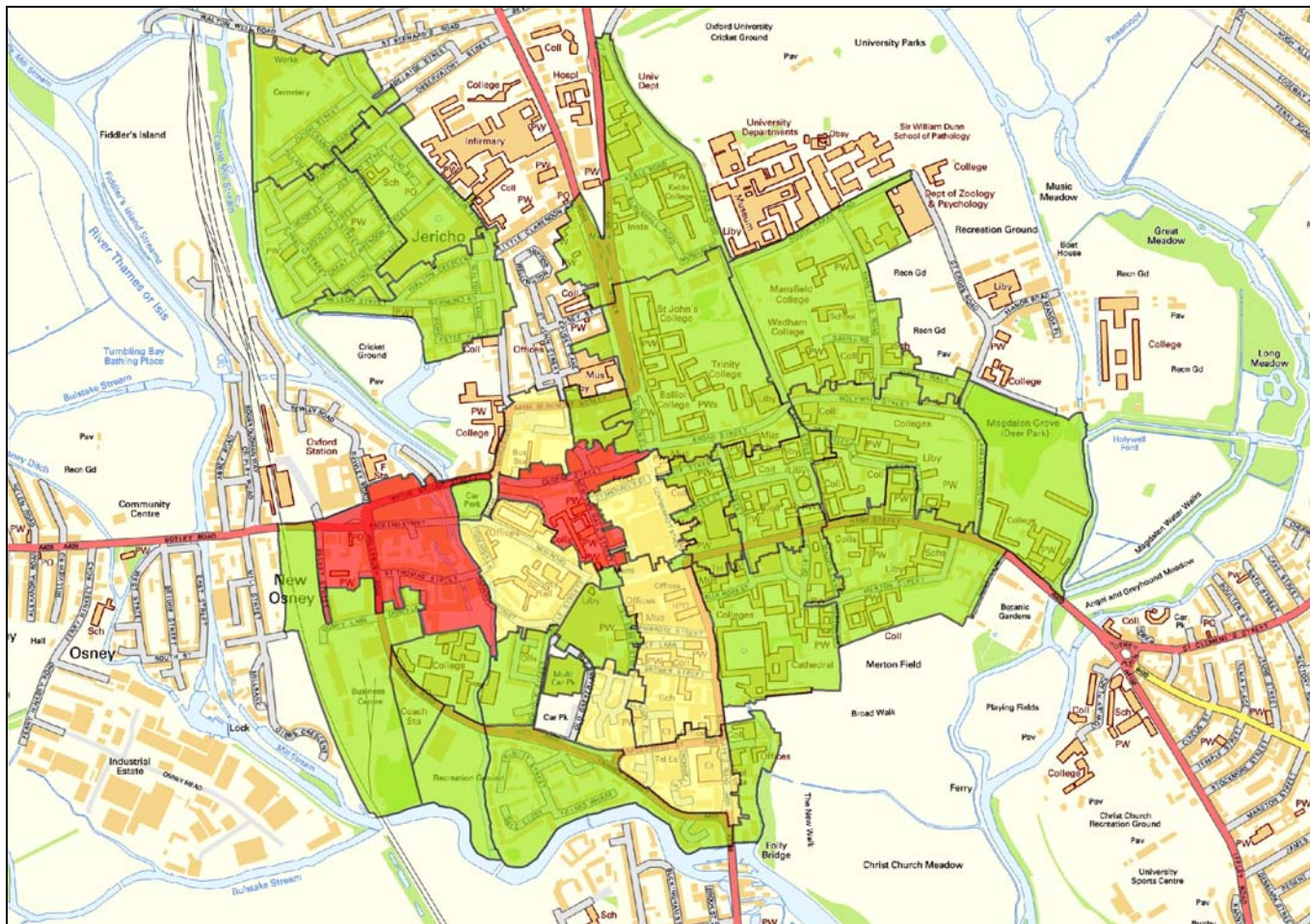
Violence and criminal damage figures for 2005/06 and 2006/07 for the City Centre

OXFORD CITY CENTRE	2005/06	2006/07	% change
Personal robbery	45	39	-13%
Common Assault	143	196	37%
Assault on a constable	40	44	10%
Wounding	293	357	22%
ABH / GBH including racial	291	355	22%
GBH with intent	2	2	-
Total violent crime	481	592	23%
Criminal damage	292	313	7%

Map to show locations of licensed premises in Oxford City Centre

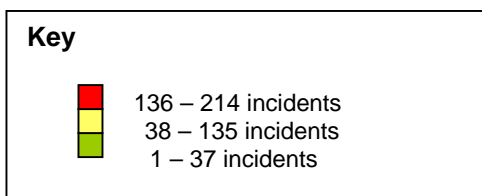


Map to show the number of incidents of all police recorded violence* in Oxford city centre, between April and December 2006

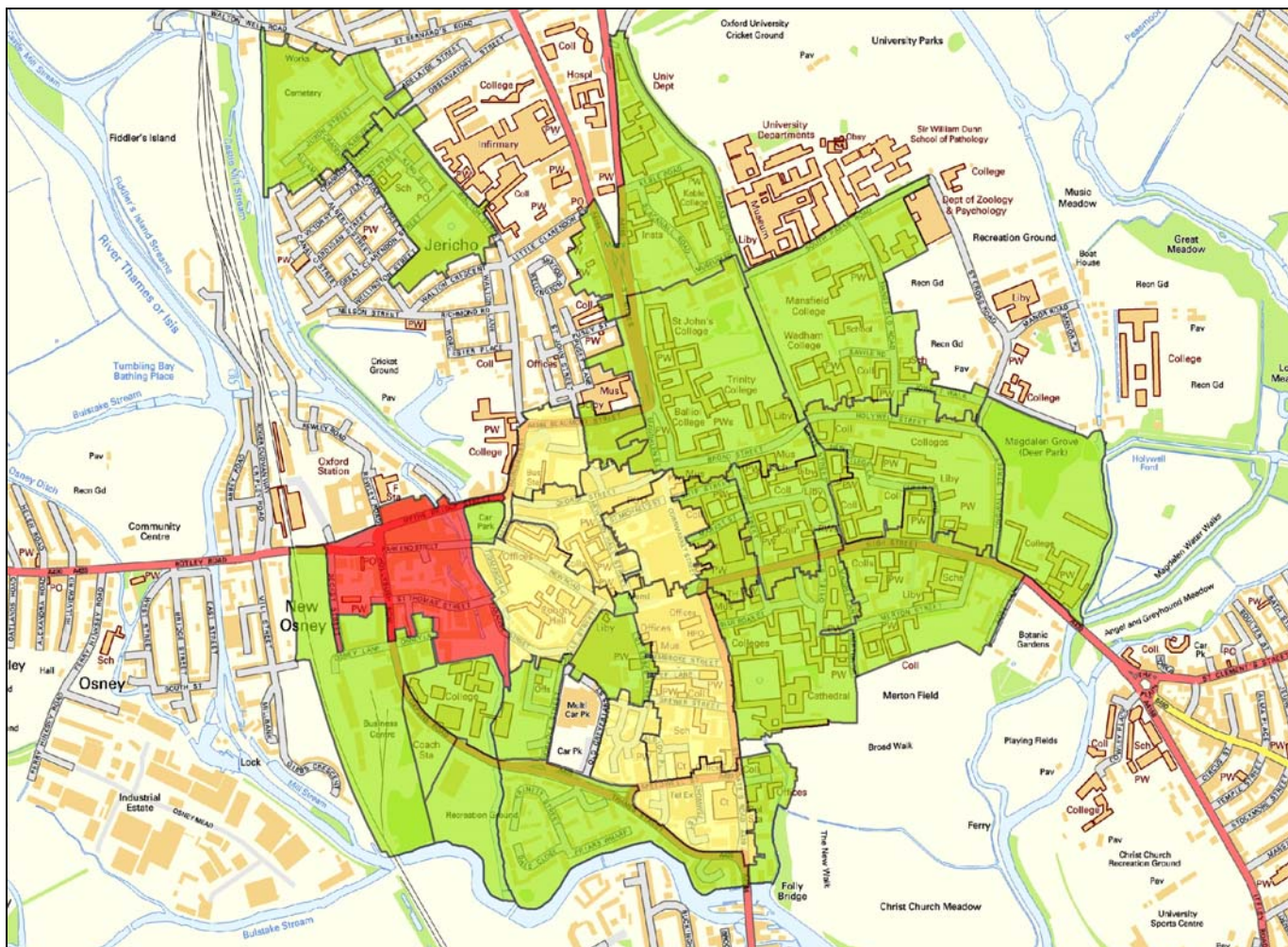


Source: Thames Valley Police, CEDAR, 2006

* For the purposes of this map, includes the following offences: Common assault, Assault ABH, Assault on a PC, GBH, Harassment, Possession of weapons with intent, Public Order Act offences, Threats to kill.

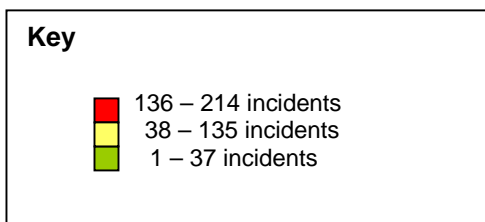


Map to show the number of incidents of police recorded violence* in Oxford city centre, between 6pm and 6am, between April and December 2006

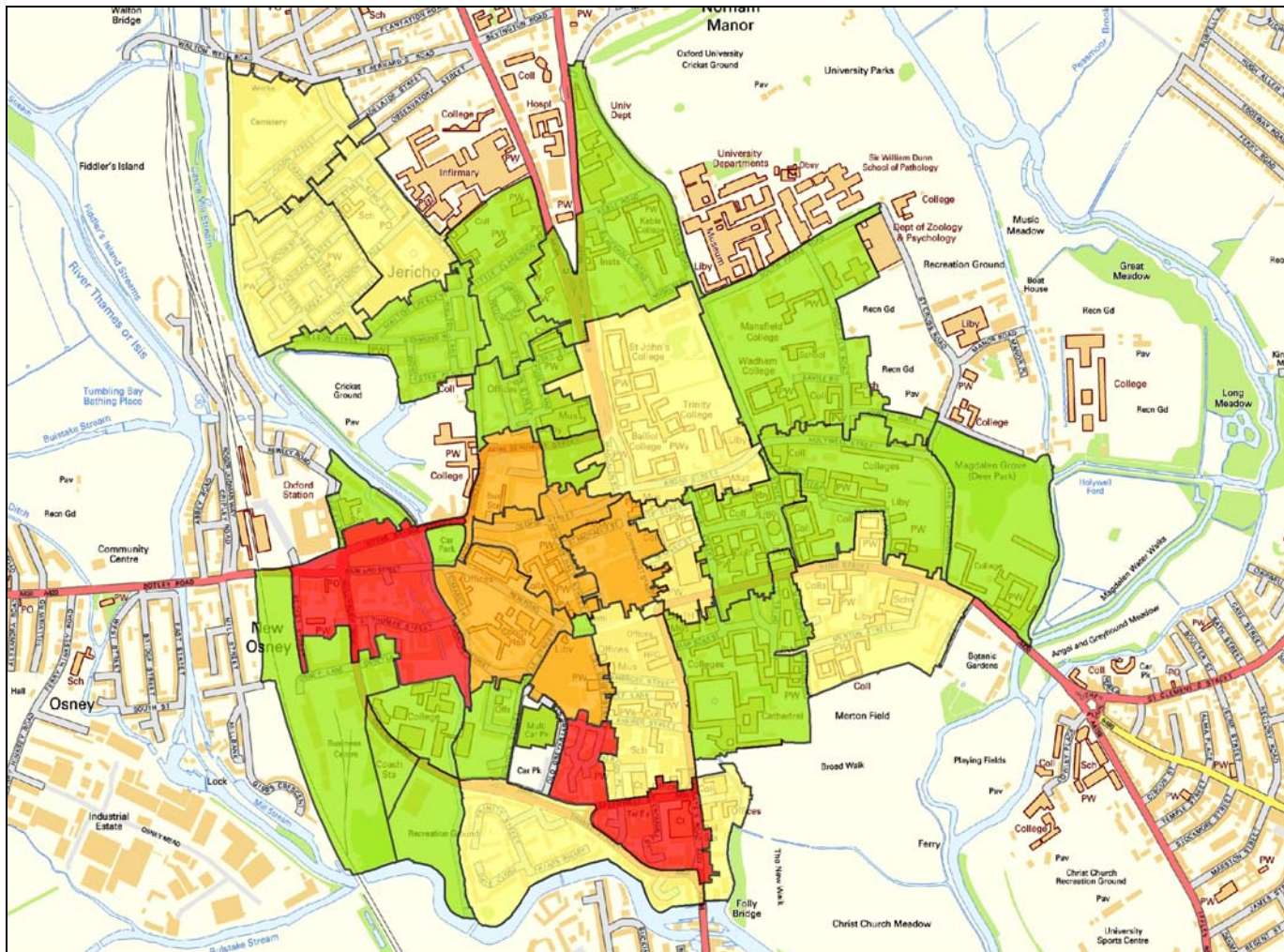


Source: Thames Valley Police, CEDAR, 2006

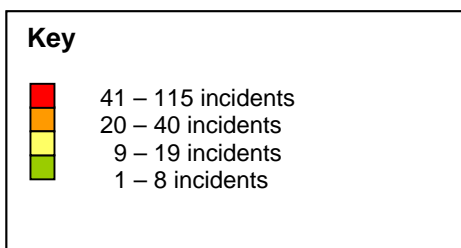
* For the purposes of this map, includes the following offences: Common assault, Assault ABH, Assault on a PC, GBH, Harassment, Possession of weapons with intent, Public Order Act offences, Threats to kill.



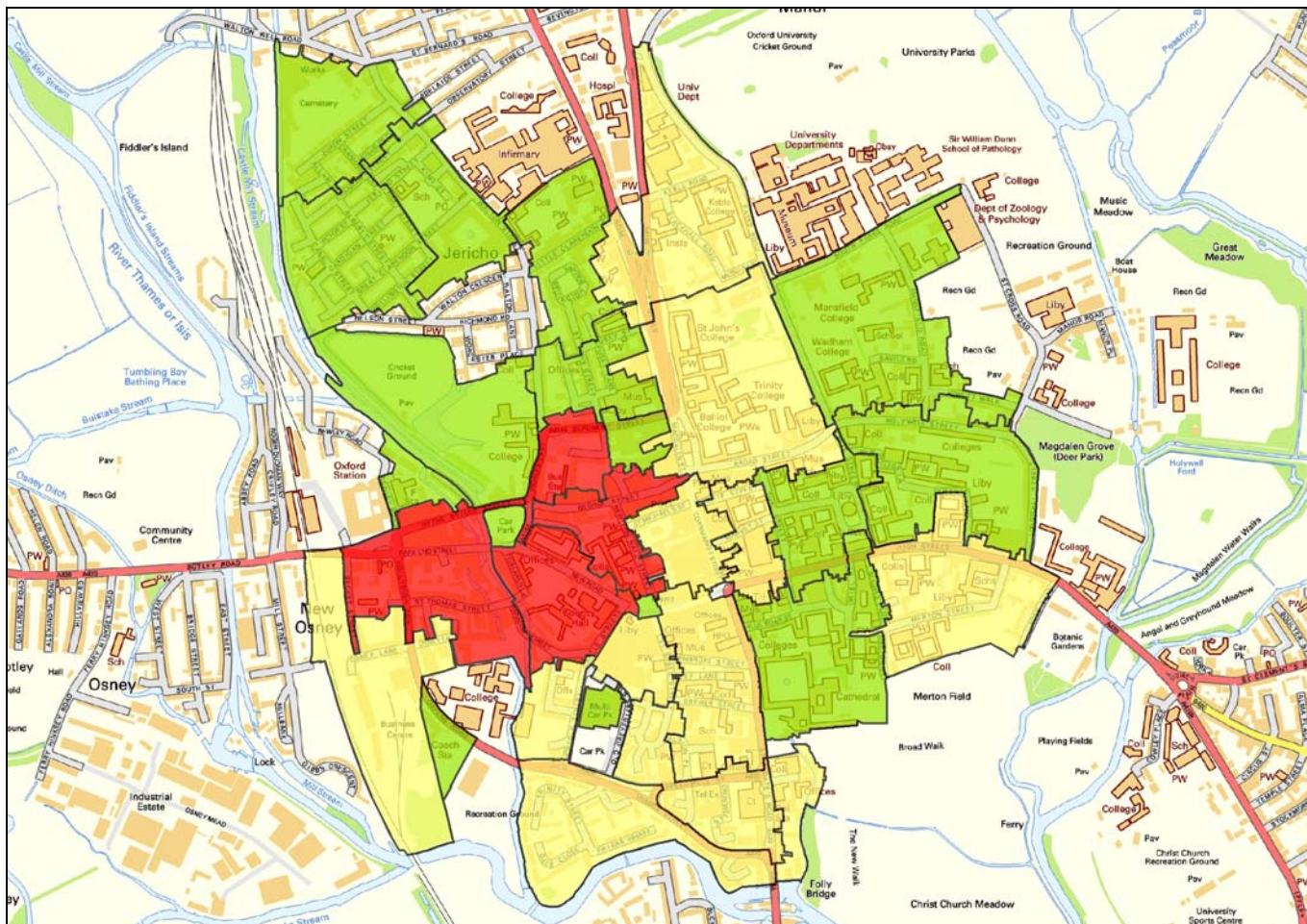
Map to show the number of all reported incidents of violence against the person in Oxford city centre, between April and December 2006



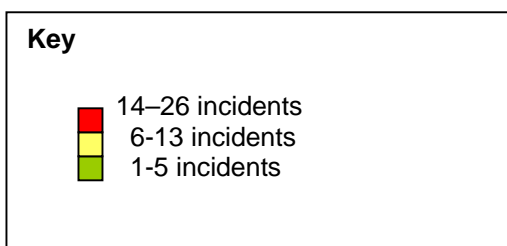
Source: Thames Valley Police, Command and Control, 2006



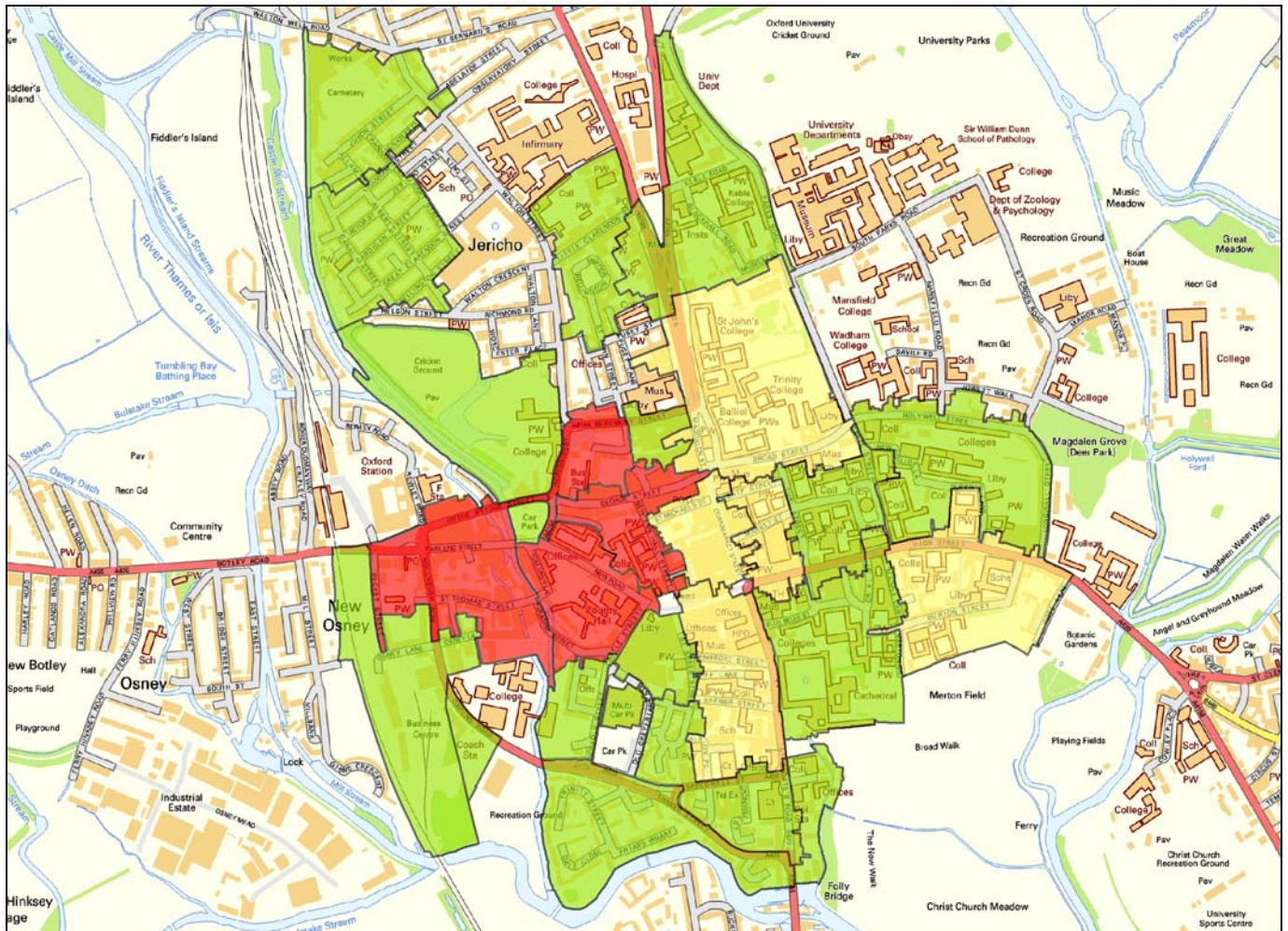
Map to show the number of incidents of all police recorded criminal damage in Oxford city centre, between April and December 2006



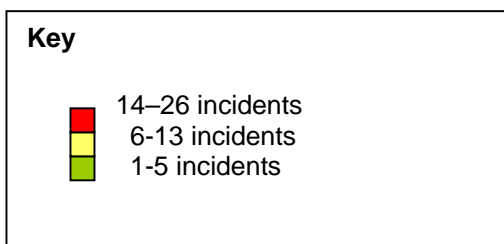
Source: Thames Valley Police, CEDAR, 2006



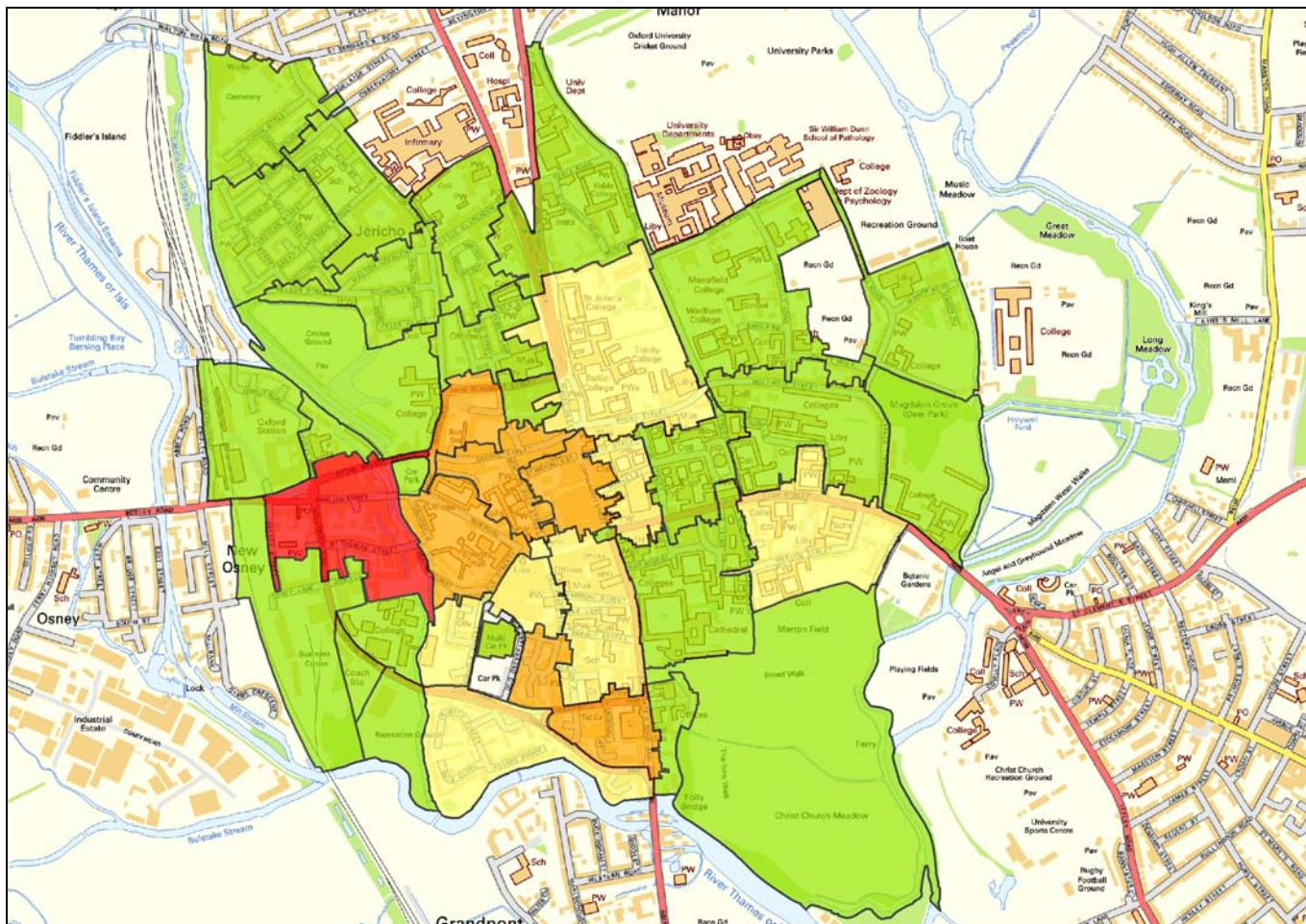
Map to show the number of incidents of police recorded criminal damage in Oxford city centre, between 6pm and 6am, between April and December 2006



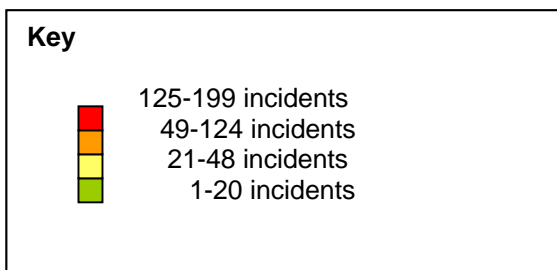
Source: Thames Valley Police, CEDAR, 2006



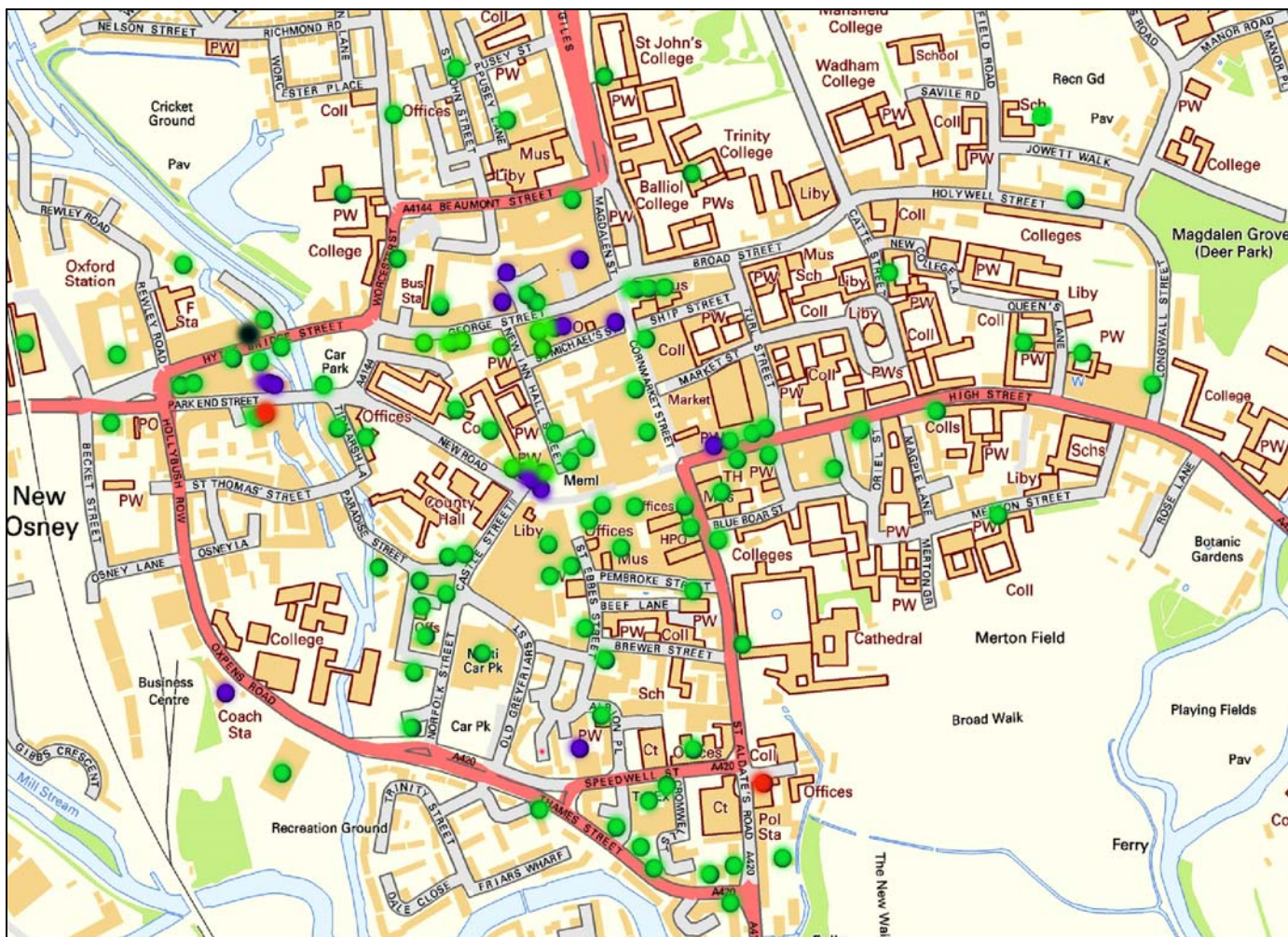
Map to show the number of reported incidents of rowdy / inconsiderate behaviour in Oxford city centre, between April and December 2006:



Source: Thames Valley Police, Command and Control, 2006



Map to show the number of ambulance pick-ups* in the City Centre area between April and December 2006:



Source: South Central Ambulance Service NHS Trust, 2006

* This map shows ambulance pick ups for patients who have been affected by: assault / sexual assault, overdose / poisoning (where possible, alcohol overdoses only have been included) or stabbing or gunshot wounds

